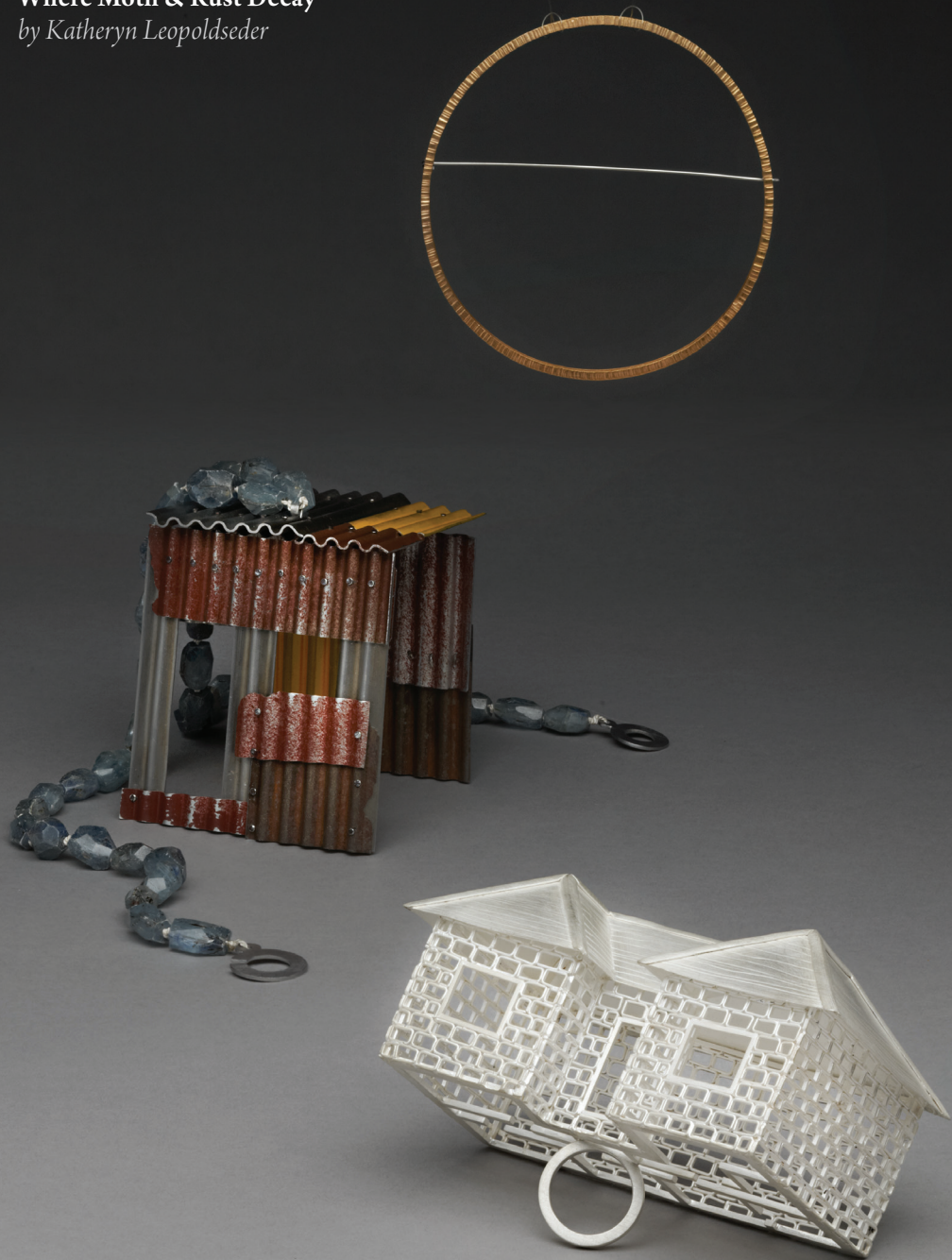


Where Moth & Rust Decay
by Katheryn Leopoldseder



You are warmly invited to
Where Moth & Rust Decay
A jewellery exhibition by Katheryn Leopoldseder

Opening Thursday the 5th of December 6–8pm
1 Shanthi Road Studio Gallery

Opening Times: 5th–11th December 2013
Open daily 11am–7pm

Catalogue available to view online from
katherynleopoldseder.com.au

Where Moth and Rust Decay responds to Katheryn's travels through India. Reflecting on the structures of the built environments of Indian and Western societies. The iconic objects that inhabit our joint aspirations and reflect on both society's value systems. What each perceives as a fulfilling, successful existence.

The exhibition examines material contrasts and the commonalities in values of the two societies through a mix of semi precious and common handmade components. The forms are readily identifiable and resonate in both societies.

The Collection aims to identify the common desire for security, value, and sense of achievement that we often attribute to the structures we establish around ourselves. While alluding to other values both societies might aspire to.

Dr Kevin Murray 2013

"Leopoldseder's exhibition is a reminder of the powerful role that jewellery plays in connecting the symbolic realm of culture with the private world of the body. She has cast the moth and gilded the rust in precious objects that ornament the promise of a common humanity"



Katheryn Leopoldseder
contemporary jeweller & artist

samavanta



1 Shanthi Road, Shanthi Nagar, Bangalore.
(+91) 98802 27706

1shanthiroad.com